

LUXURIOUS

collection



Quartz Kitchen Sink



**THE
EVERGREEN
DESIGN FEEL**



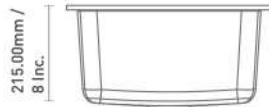
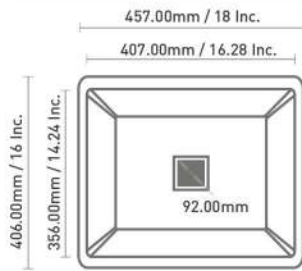
the focal point of your kitchen with
modern design to make eye catching attraction!



Quartz Kitchen Sink



DIMENSIONS



VOLVO	10MM THICKNESS
SIZE (L x W)	WEIGHT
18x16x8 inch	9 kg. (Approx)

INSTALLATION



TOP MOUNT



FLUSH MOUNT



UNDER MOUNT

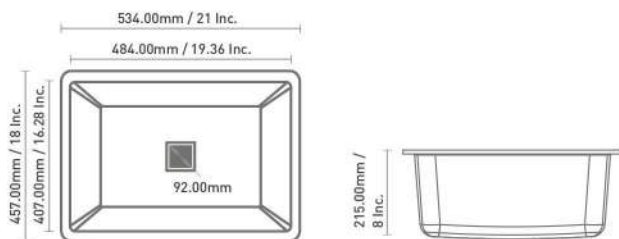


Quartz Kitchen Sink



TRINITY		10MM THICKNESS
SIZE (L x W)	WEIGHT	
21x18x8 inch	10 kg. (Approx)	

DIMENSIONS



INSTALLATION



TOP MOUNT



FLUSH MOUNT



UNDER MOUNT

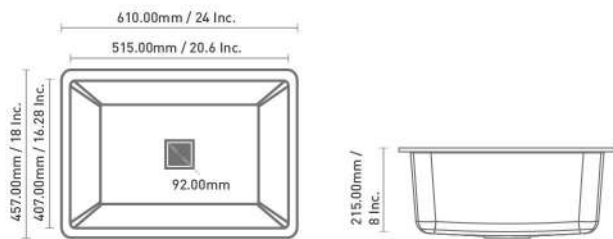
Quartz Kitchen Sink



NEW
ARRIVAL



DIMENSIONS



VOLCAND	
	10MM THICKNESS
SIZE (L x W)	WEIGHT
21x18x8 inch	11.8 kg. (Approx)

INSTALLATION



TOP MOUNT



FLUSH MOUNT



UNDER MOUNT

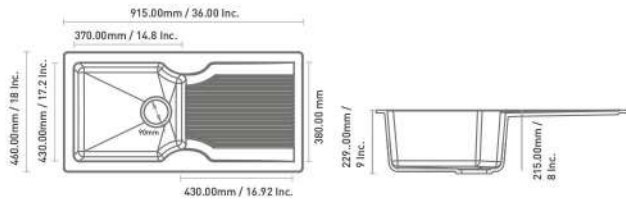


Quartz Kitchen Sink



DIMENSIONS

MISKATONIC	10MM THICKNESS
SIZE (L x W)	WEIGHT
36x18x8 inch	17 kg. (Approx)



INSTALLATION



TOP MOUNT



FLUSH MOUNT



UNDER MOUNT

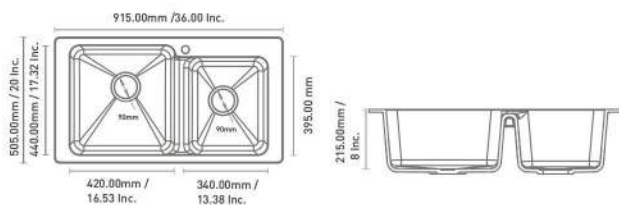


Quartz Kitchen Sink



CATHOLIC	10MM THICKNESS
SIZE (L x W)	WEIGHT
36x20x8 inch	23 kg. (Approx)

DIMENSIONS



INSTALLATION



TOP MOUNT



FLUSH MOUNT



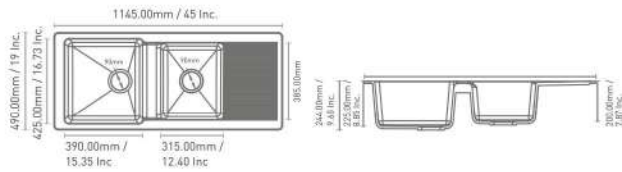
UNDER MOUNT

Quartz Kitchen Sink



DIMENSIONS

EVOLUTION	↓ 10MM THICKNESS
SIZE (L x W)	WEIGHT
45x19x9 inch	27.5 kg. (Approx)



INSTALLATION



TOP MOUNT



FLUSH MOUNT



UNDER MOUNT



QUARTZ

KITCHEN SINK



COLORS / SHADES

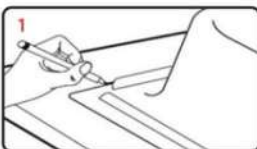
METALLIC SERIES

- MID NIGHT BLACK /SMOKY LACK
- SNOW PEARL /WHITE
- CEMENTO GREY /ULTRA GREY
- CHOCO /DARK BROWN

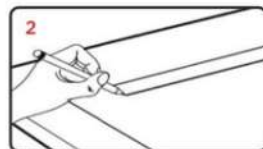
GRANITE SERIES

- MOZAIC WHITE /RUSTIC WHITE
- MOZAIC SLATE /CERA DATED
- MOZAIC REDMOON /MARS
- MOZAIC IVORY /COOL IVORY

INSTALLATION OF THE SINK PREPARING A NEW COUTERTOP



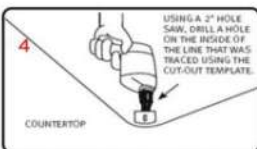
Trace the sink outline on the countertop (do not cut along this line).



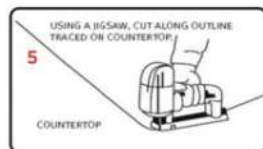
Draw a line 1 cm inside the sink outline.



Measure the cut-out line you just drew and compare to all dimensions (double check)



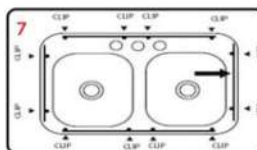
Using a 2" hole saw, Drill a pilot hole inside the cutting line.



Using a jigsaw, cut along the inside line to cut the opening in the countertop.



With sink in the upside down position, place a continuous and generous bead of silicone sealant around the entire perimeter of the rim. This serves as a watertight seal.



Lift sink, turn face up and lower into the countertop cutout opening. Wipe excess sealant from perimeter with a wet cloth



DRILLING TAP HOLE Invert the Sink, Use the marking to Drill the Hole with Wood Cutting Bit



🏠 Corporate office : Mestro Ceramics

Shop No.27, Ground Floor Super Market,
Sanala Road, Morbi(GUJ.)363641.

☎ +91 99254 68000

☎ +91 97732 46460

✉ mestroc ceramics@gmail.com

📍 Regional office : Mestro Ceramics

Ramesh Subramanian,
15-D, P.T. Rajan Salai, K.K. Nagar,
Chennai - 600078

☎ +91 97909 00029

Follow us   

